

Brain Tumor Extraction using Artificial BEE Colony based segmentation

Sagar C. Kadam, Anuradha B Pawar

Pursuing M.E. (E&TC), Gangamai College of Engineering, Nagaon, Dist. Dhule, (M.S.), India

Asst. Prof, Department of E &TC Engineering, Gangamai College of Engineering, Nagaon, Dhule (M.S), India

ABSTRACT: Brain tumor detection and segmentation is one in every of the foremost difficult and time overwhelming task in medical image process. magnetic resonance imaging (Magnetic Resonance Imaging) may be a medical technique, in the main utilized by the radiotherapist for visualization of internal structure of the body with none surgery. Magnetic resonance imaging provides plentiful info regarding the human soft tissue that helps within the designation of neoplasm. In this paper median filter will be used to remove noise. Segmentation will be done by using proposed algorithm and extract the tumor pattern. Taking in to account the said challenges, this analysis is concentrated towards highlight the strength and limitations of earlier projected classification techniques mentioned within the up to date literature.

KEYWORDS: median filter, segmentation, MRI, tumor, gabor filter, DICOM image, image processing.

I. INTRODUCTION

The human body is consisting of various types of cells and every cell has its own specific function. On losing the ability to grow properly, cells start growing in an improper fashion and in an unordered manner. Extra cells are grouped together to form a mass of tissue which is called tumor .A tumor is an abnormal growth caused by cells reproducing themselves in an uncontrolled manner. These cells can be categorized in two ways: Benign and malignant. Benign tumors do not contain cancer cells and malignant tumors contain tumor cells [1]. Brain tumor is one of the prime causes behind the increase in mortality among people. A tumor also known as neoplasm is a growth in the abnormal tissue which can be differentiated from the surrounding tissue by its structure [2].Brain tumor can occur in different parts of the brain. Brain tumors either include tumors in the central spinal canal or inside the cranium. The most common brain tumors are Gliomas, Oligodendroglioma, Meningiomas, and Glioblastoma.

At present with the involvement of high resolution diagnostic techniques e.g. Magnetic Resonance Imaging (MRI), Computed Tomography (CT), functional MRI (fMRI), Positron Emission Tomography (PET), and Single Photon Emission Computed Tomography (SPECT) in medical imaging we have gained more knowledge about brain tumor than last hundred years. Now imaging facilitates secondary prevention by offering the detection of tumors in developing stages before symptoms start appearing. Early detection usually results in less extensive treatment and better outcomes. Detection of tumors by image processing is known to reduce the mortality subsequently [3]. MRI is a medical imaging technique, and radiologists use it for visualization of the internal structure of the body. Magnetic resonance images are used to produce images of soft tissue of human body. Automatic defects detection in MRI is quite useful in several diagnostic and therapeutic applications computed tomography and MRI are two imaging modalities that help researchers and medical practitioners to study the brain by looking at it noninvasively [2].

Detection and segmentation of brain tumor- in MR images is very important in medical diagnosis. Brain tumor is the most dangerous diseases occurring commonly among the human beings, so study of brain tumor is very important [1]. Brain tumor detection is one of the most important methods in medical image mining. An automatic segmentation of brain MR images is needed to correctly segment white matter (WM), gray matter (GM) and cerebrospinal fluid (CSF) tissues of brain in a shorter span of time. All tumors will start small and grow with time. As they grow, they will

International Journal of Innovative Research in Science, Engineering and Technology

(An ISO 3297: 2007 Certified Organization)

Vol. 6, Special Issue 11, May 2017

become more conspicuous and increase the probability of showing their characters. A person with tumor usually has certain symptoms and this will bring that person to a physician. [4].

II. RELATED WORK

The images were acquired in MINC format, which are then converted to JPEG format before the processing in [5]. Image enhancement techniques were used to improve the visual appearance of the MRI, by eliminating high frequency components from the images. The proposed system describes the image enhancement done using Histogram Equalization (HE) and Center Weighted Median (CWM) filter for removing high frequency components such as impulsive noise, salt and pepper noise, etc. In this, the modified artificial bee colony optimization and modified fuzzy possibility c-means (MFPCM) algorithm was used to detect brain tumor. This work is mainly focused to reduce the computational complexities, which are found in existing methods and aimed at getting higher accuracy [5].

In [6] proposed two main clustering based segmentation methods named Fuzzy C-Means and K-Means to detect brain tumor. By changing the image mode to gray-scale, remove the color components for FCM and K-MEANS. The Enhancement of the image was done by using median filter. Author has been Plotted the histogram to study and analyze the intensity distribution of the pixel. In [7], a novel approach was applied to MRI Brain Image segmentation based on the Hybrid Parallel Ant Colony Optimization (HPACO) with Fuzzy Algorithm. In this the block based non rigid registration has been applied, Author has been applied clustering methods PSO with FCM, HPACO with FCM to detect the tumor region. HPACO was given the best accuracy comparing with other optimization techniques. Overall accuracy of tumor Gray Level Similarity Measure using HPACO is 95.16%. Author achieved the lowest error Rate was about 20%.

The previous methods for brain tumor segmentation are thresholding, region growing & clustering. Thresholding is the simplest method of image segmentation. From a grayscale image, thresholding can be used to create binary images. During the thresholding process, individual pixels in an image are marked as "object" pixels if their value is greater than some threshold value and as "background" pixels otherwise. This convention is known as threshold above. The major drawback to threshold-based approaches is that they often lack the sensitivity and specificity needed for accurate classification. The first step in region growing is to select a set of seed points. Seed point selection is based on some user criterion. [8].

In [9], the image slicing exploitation bit plane technique and reconstructed exploitation Principal was used to extract the brain tumor. The dimensions of tumor and also the quantitative relation of tumor and non tumor space have been calculated using 2by2 neighborhood technique, which can also be used to monitor the efficacy of radiotherapy and chemotherapy sessions. Quadrant method has been developed to find the direction in which the tumor is spreading. This approach will group the kind of mind tumor and consequently help radiologists to arrange the sessions. The results were checked on all 16 images manually and found the efficiency as 93.75%.

S. Mahalakshmi et.al in [10] implemented the PSO algorithm with image segmentation techniques. In this the Digital Imaging and Communication in Medicine (DICOM) file format converted into image file format. PSO algorithm was implemented to detect the tumor. The automation of MRI brain images to detect the brain tumor is based on the criteria of elapsed time and the segmentation level. The process of segmenting the MRI brain image by PSO algorithm is better for the coronal plane than the axial plane.

In [11], the brain tumors have been segmented with the help of three methods Fuzzy C Means, K Means and Hierarchical clustering algorithm. The execution time for Hierarchical clustering was less compared to the other clustering methods. In this the three clustering algorithms were tested with a database of MRI brain images for nonmedical format images. The K-means and Fuzzy C means clustering achieved about 70% result. By using Hierarchical clustering achieved about 66.66% and for DICOM images overall efficiency for all algorithms proved to be improved up to 86%. Tumour location detection algorithm increases overall efficiency of the system as it reduces FP(False Positive) output form segmentation algorithm.

The segmentation of brain tumor was done using entropy based methods and clustering based methods in [12]. The noise has been removed using median filter, average filter. The morphological operation was performed on brain images. The author achieve segmentation accuracy based on PSNR (Signal to Noise Ratio) was high for rough entropy and MSE value was minimum in rough

International Journal of Innovative Research in Science, Engineering and Technology

(An ISO 3297: 2007 Certified Organization)

Vol. 6, Special Issue 11, May 2017

entropy. This work illustrates that the rough entropy has higher accuracy compared with Renyi Entropy, Shannon Entropy, MinEntropy and Log Energy

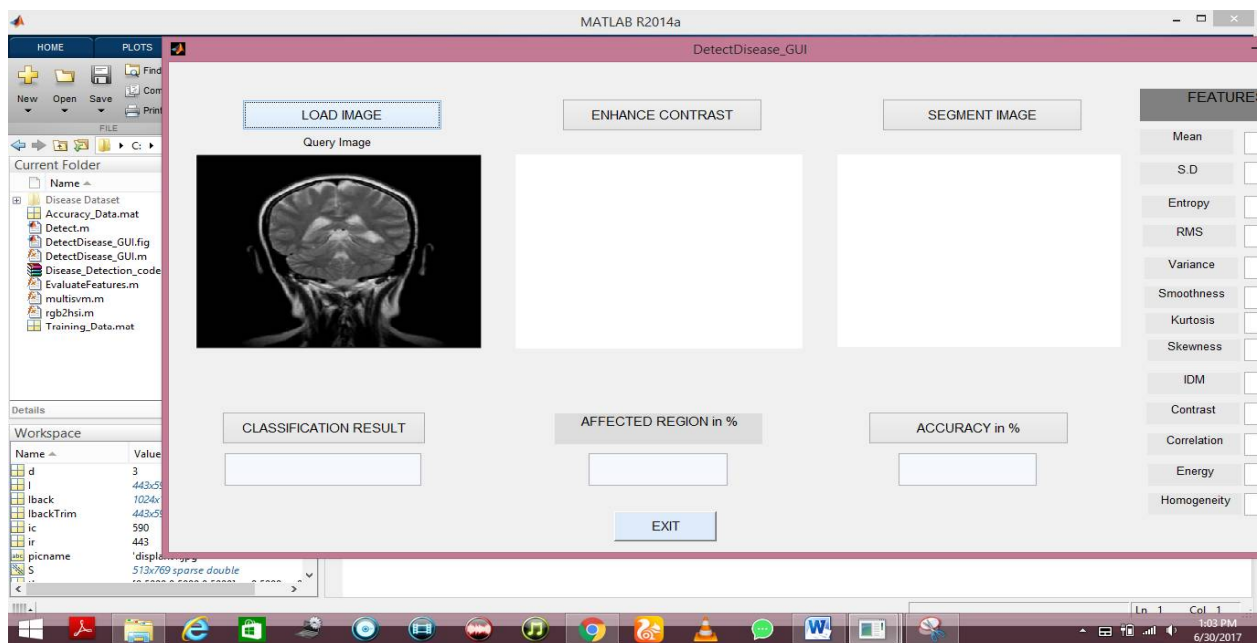
III. PROPOSED METHODOLOGY

The extraction of brain tumors from MRI images is handled in three stages such as pre-processing, processing and post processing presented in Fig.. The detailed description of the proposed methodology is as follows;

- a) Pre-processing: In this stage, the main purpose is to enhance the input MRI image or eliminate noise in order to prepare it to the segmentation process since noise appeared on image might ruin segmentation quality. Various filters such as average, median and adaptive Gaussian filter etc. have been proposed to clear the image from unfavorable candidates. From all those filters, 2D 3x3 median filter is experimentally selected for the pre-processing stage.
- b) Processing: In this stage, segmentation is applied to the enhanced image. For the segmentation, artificial bee colony based clustering method [13] is selected since the performance of that method is satisfactory.

IV. RESULT ANALYSIS

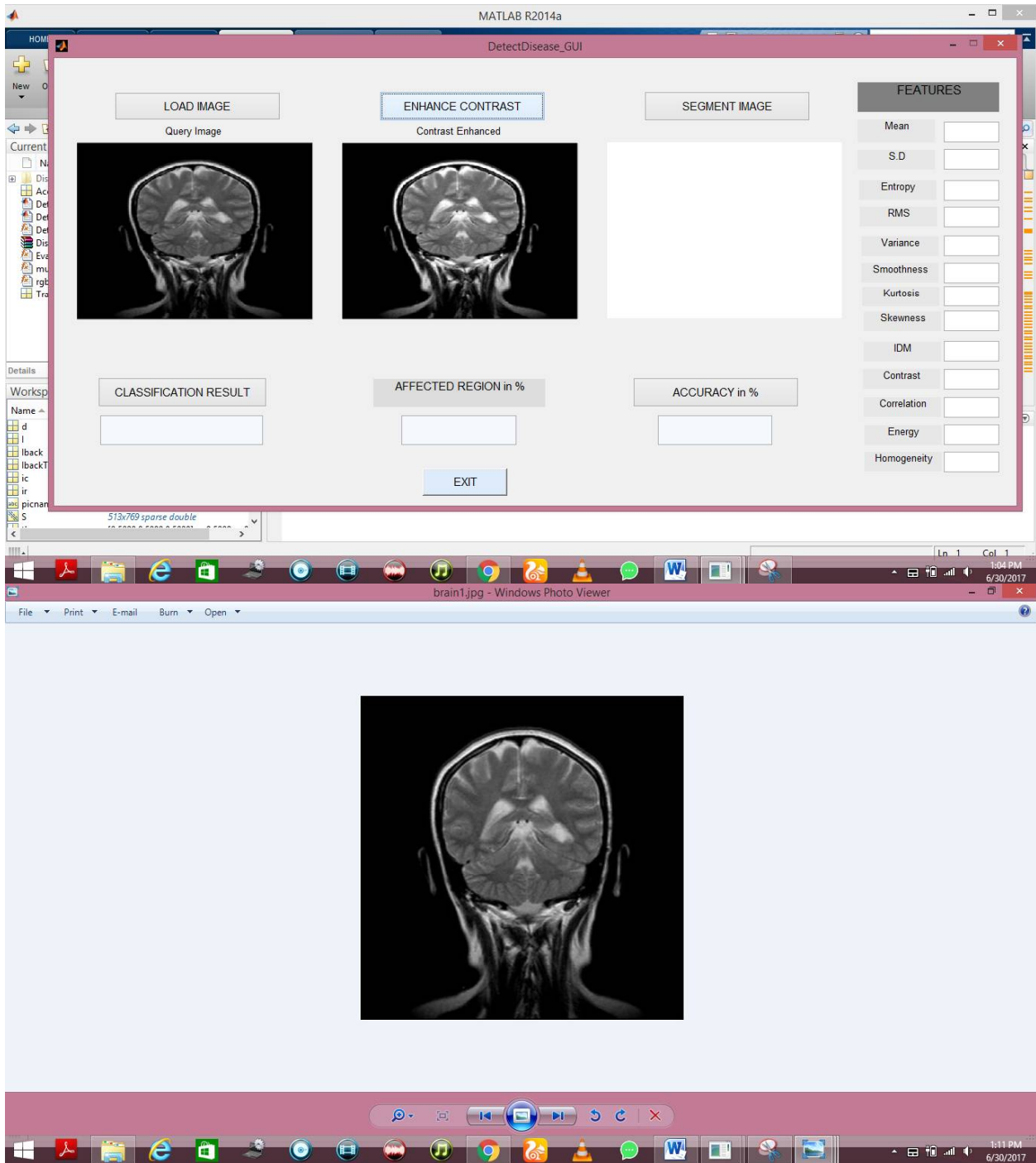
In this research work, the proposed techniques have been carefully implemented to produce robust, accurate and increased accuracy. Following are the simulation results obtained .



International Journal of Innovative Research in Science, Engineering and Technology

(An ISO 3297: 2007 Certified Organization)

Vol. 6, Special Issue 11, May 2017

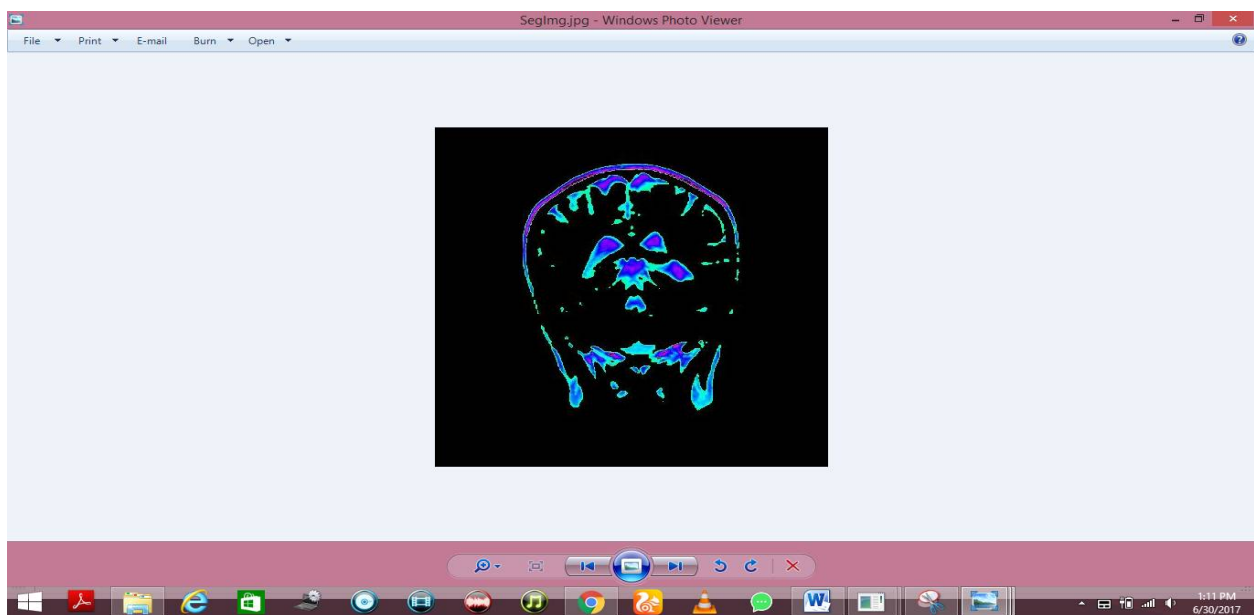
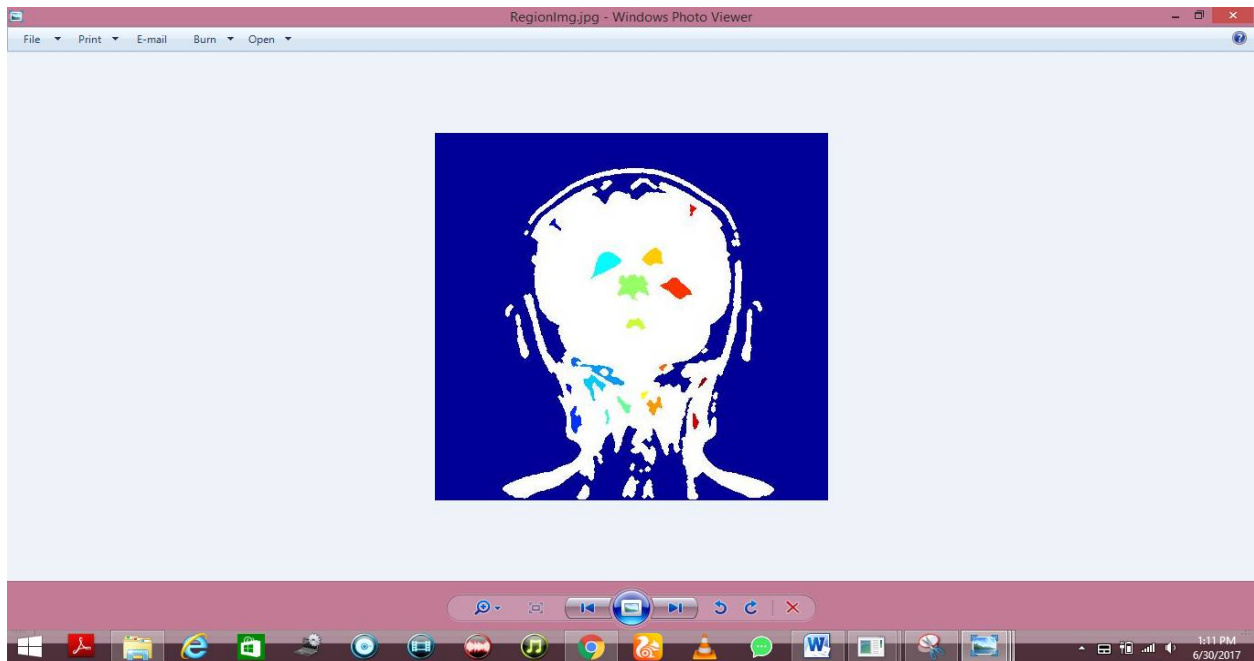


International Journal of Innovative Research in Science, Engineering and Technology

(An ISO 3297: 2007 Certified Organization)

Vol. 6, Special Issue 11, May 2017

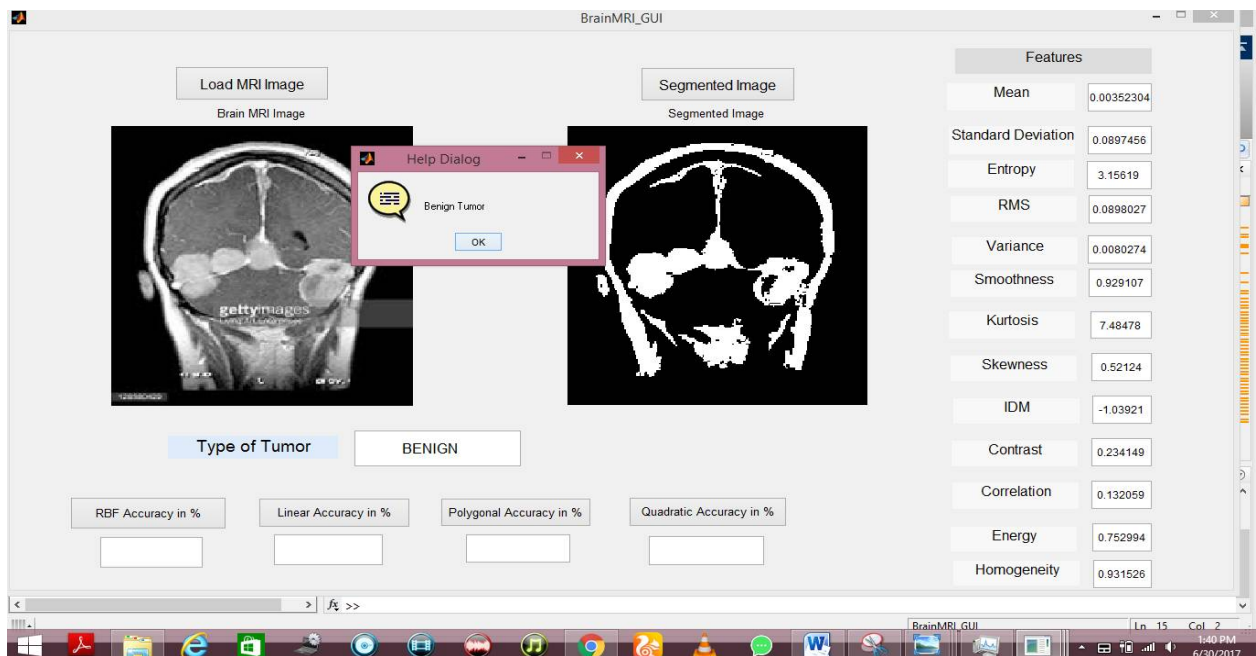
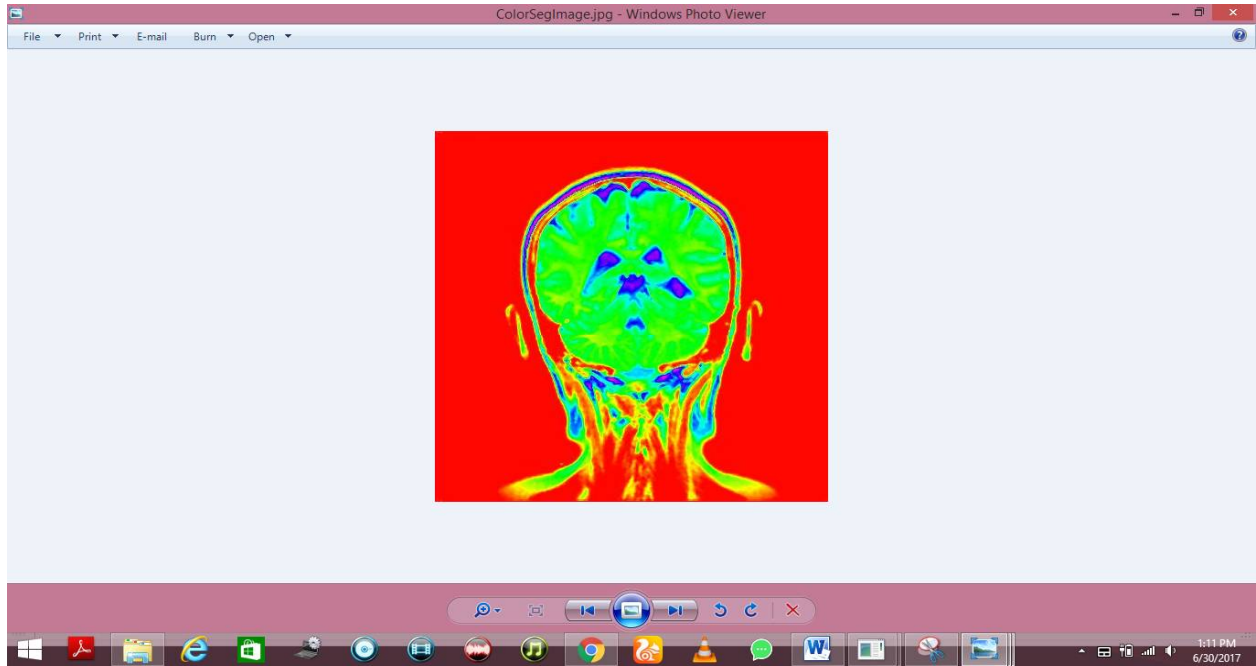
**Here in below image red color part refers to the
Tumor Part**



International Journal of Innovative Research in Science, Engineering and Technology

(An ISO 3297: 2007 Certified Organization)

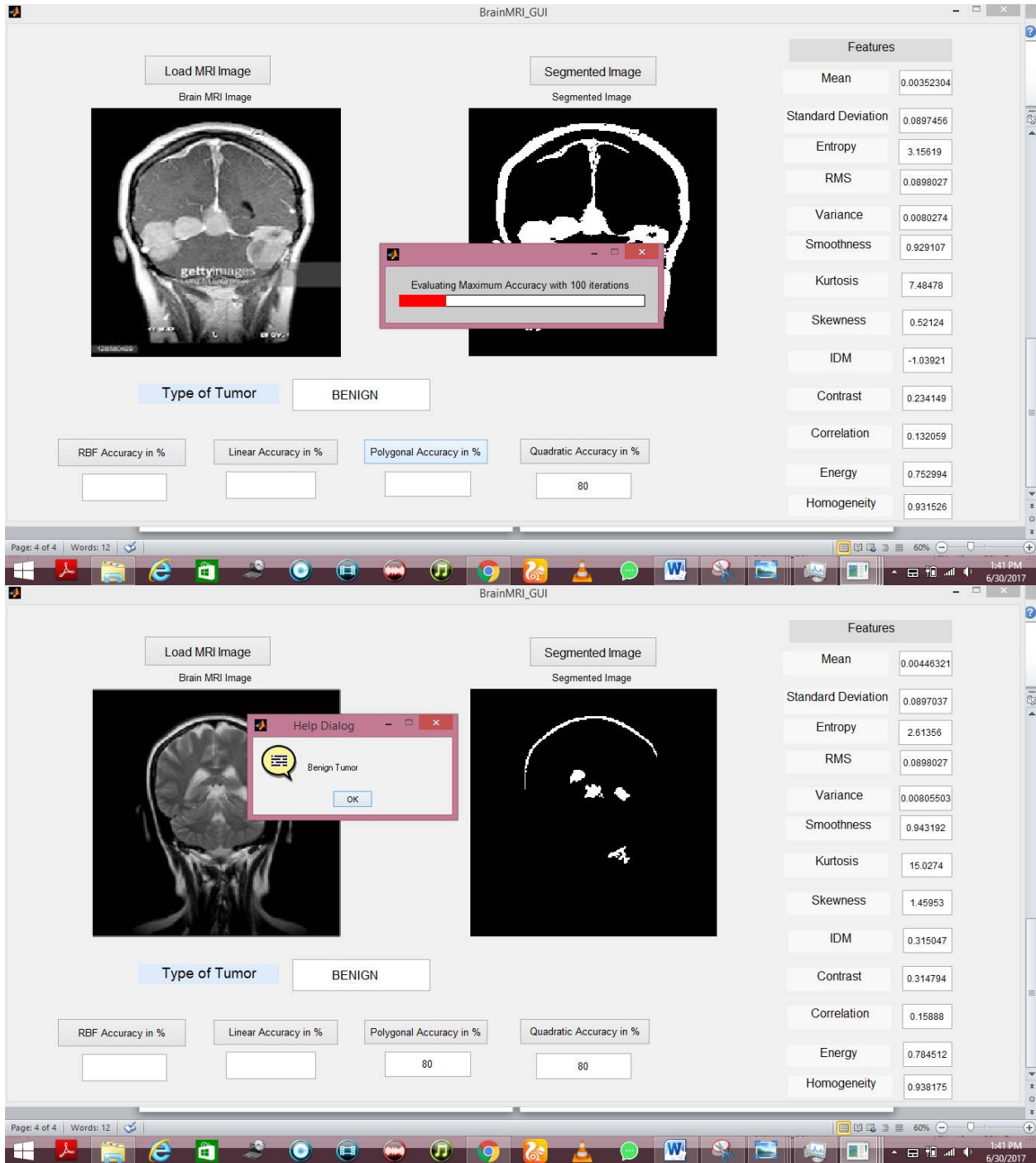
Vol. 6, Special Issue 11, May 2017



International Journal of Innovative Research in Science, Engineering and Technology

(An ISO 3297: 2007 Certified Organization)

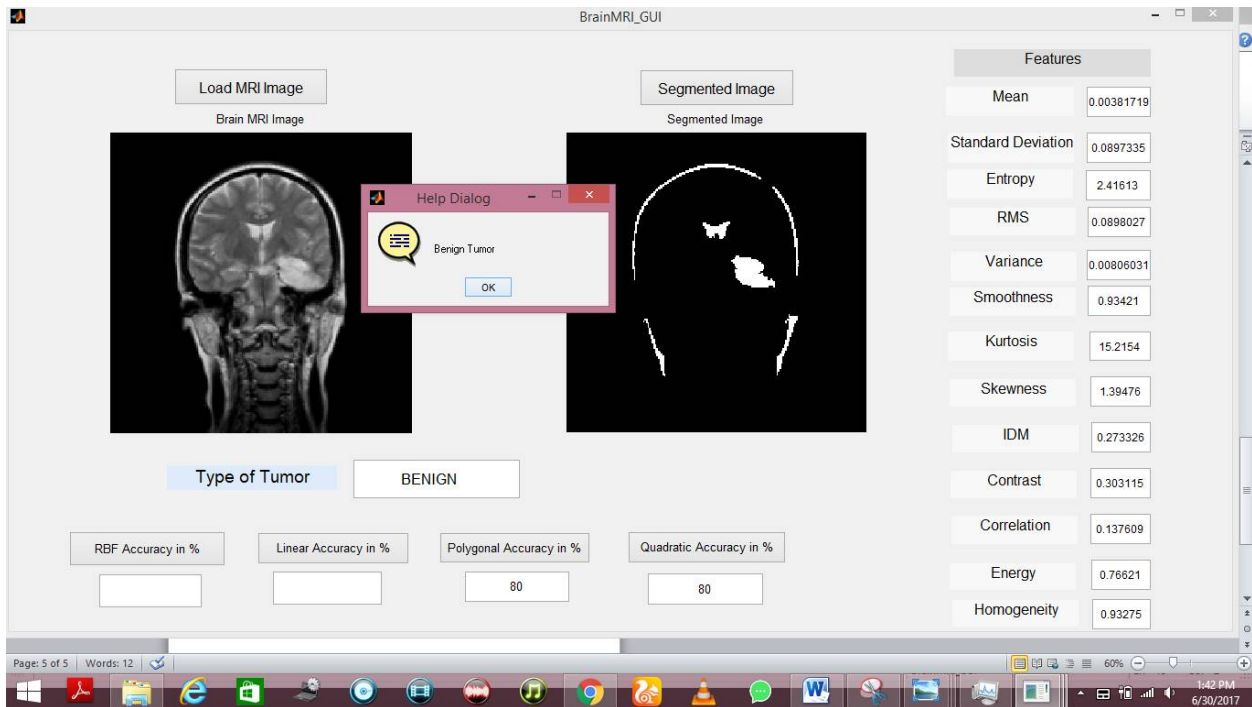
Vol. 6, Special Issue 11, May 2017



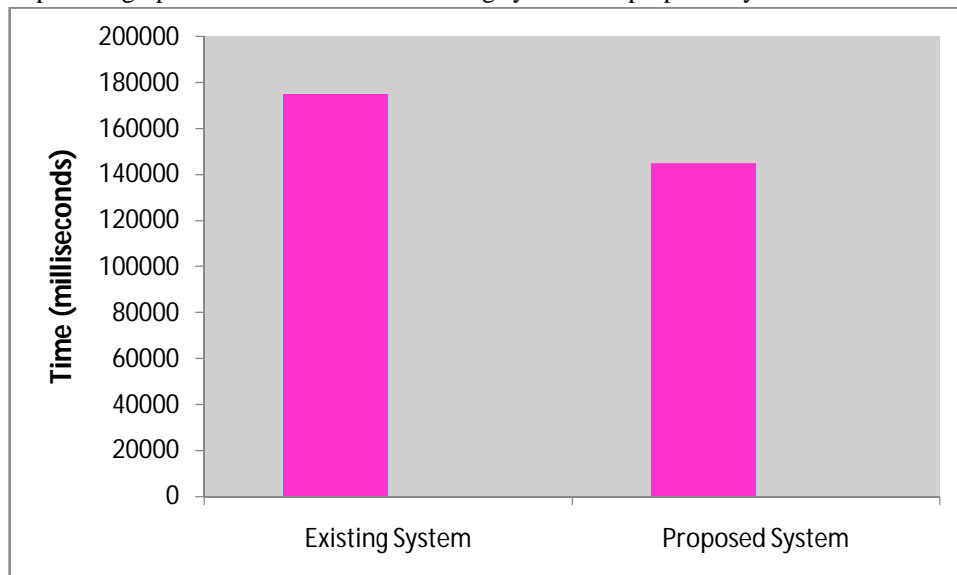
International Journal of Innovative Research in Science, Engineering and Technology

(An ISO 3297: 2007 Certified Organization)

Vol. 6, Special Issue 11, May 2017



Following is comparison graph of execution time of existing system and proposed system:



There are three different segmentation approaches have been used for detection of tumor in brain MRI images for the comparative analysis. The techniques were tested over real brain MRI images and results were obtained and compared with existing popular algorithms. All experiments were done on a PC with 2.20 GHz Intel(R) Core(TM) 2 Duo CPU, 3 GB of RAM with Matlab2013a .

The 50 MRI brain T1 weighted images were taken for segmentation and performance analysis was carried out and the results are discussed in this chapter. The results are categorized into two different aspects. Results based on Percentage of infection found and machine time. The results have been tabulated and graphical representations have been

International Journal of Innovative Research in Science, Engineering and Technology

(An ISO 3297: 2007 Certified Organization)

Vol. 6, Special Issue 11, May 2017

presented with the following perspective view. Table 1 shows the comparison between the earlier implemented segmentation techniques as PSO, Fuzzy C Means and K Means with the Proposed segmentation technique in terms of percentage of infection found.

Image name	PSO	Fuzzy C mean	K Mean	Proposed
	Percentage of infection			
IMG_1	9	13	9	7
IMG_2	6	40	7	4
IMG_3	14	14	14	5
IMG_4	21	25	21	20
IMG_5	7	12	12	4

Table 1: Comparison between PSO, Fuzzy C mean and k Mean algorithm in terms of percentage of infection found

The table 2 shows the comparison between the PSO, Fuzzy C means and K Means with the proposed technique in terms of CPU time needed in seconds.

Image name	PSO	Fuzzy C mean	K Mean	Proposed
	CPU time needed(seconds)			
IMG_1	2.58	3.5	3.60	1.62
IMG_2	2.58	2.99	2.93	2.41
IMG_3	3.02	2.15	3.02	2.34
IMG_4	1.85	1.62	2.99	1.35
IMG_5	1.82	1.85	1.82	1.45

Table 2: Comparison between PSO, Fuzzy C mean and k Mean algorithm in terms of CPU time needed

V. CONCLUSION AND FUTURE WORK

In this research work, equal emphasis is given for image segmentation in the context of abnormal MR brain image analysis. Different segmentation techniques and fuzzy techniques are studied in this work. A comparative analysis between three techniques is given in this paper to bring out the merits and demerits of each technique. Different set of feature values may be used to enhance the performance of the proposed systems. The proposed segmentation technique gives the better result as well as better accuracy than previously implemented technique. The proposed methodology requires less CPU time to extract the tumor region. In future Ground truth can be collected for real-time images in order to perform multi-level segmentation with real-time images. The user can process the DICOM images in matlab to improve the accuracy of the detection process also can use various data mining technique to obtained the better result.

International Journal of Innovative Research in Science, Engineering and Technology

(An ISO 3297: 2007 Certified Organization)

Vol. 6, Special Issue 11, May 2017

REFERENCES

- [1] Komal Sharma¹, Akwinder Kaur², Shruti Gujral³, "A review on various brain tumor detection techniques in brain MRI images" IOSR Journal of Engineering (IOSRJEN) www.iosrjen.org, Vol. 04, Issue 05, PP 06-12, May. 2014.
- [2] K.R.Yasodha M.Sc¹, Dr. V.Thiagarasu M.Sc., PGDCA, M.Phil, B.Ed, Ph.D , " Automatic Segmentation of Brain Tumor from MRI Images- A Review", International Journal of Computer Trends and Technology (IJCTT) ,volume 4 Issue 9, PP 3110-3116, Sep 2013.
- [3] RanaBainik, Md. RabiulHasan, Md. Saiffftekhar, " Automatic Detection, Extraction and Mapping of Brain Tumor from MRI Scanned Images using Frequency Emphasis Homomorphic and Cascaded Hybrid Filtering Techniques", 2nd Int'l Conf. on Electrical Engineering and Infonnation& Communication Technology (ICEEICT) 2015.
- [4] Ed-EdilyMohd. Azhari¹, Muhd. MudzakkirMohd. Hatta¹, ZawZaw Htike^{1*} and Shoon Lei Win², " Brain Tumor Detection And Localization In Magnetic Resonance Imaging", International Journal of Information Technology Convergence and Services (IJITCS) Vol.4, No.1, PP 111February 2014.
- [5] B. Thiagarajan, R. Bremananth , "Brain Image Segmentation Using Conditional Random Field Based On Modified Artificial Bee Colony Optimization Algorithm", World Academy of Science, Engineering and Technology International Journal of Medical, Health, Biomedical, Bioengineering and Pharmaceutical Engineering Vol:8, No:9, PP 674-684, 2014.
- [6] Jinal A. Shah , S. R. Suralkar, " Brain Tumor Detection from MRI Images using Fuzzy C-Means Segmentation", International Journal of Advanced Research in Computer and Communication Engineering Vol. 5, Issue 6,PP 178-183, June 2016.
- [7] Dr.N. NandhaGopal, " Automatic Detection of Brain Tumor through Magnetic Resonance Image", International Journal of Advanced Research in Computer and Communication Engineering Vol. 2, Issue 4,PP 1647-1651, April 2013.
- [8] A.S.Bhide¹ Priyanka Patil², ShraddhaDhande, " Brain Segmentation using Fuzzy C means clustering to detect tumour Region", International Journal of Advanced Research in Computer Science and Electronics Engineering Volume 1, Issue 2, PP 85-90, April 2012.
- [9] MadhavKurupl, AbhijithBailur, PavithraRajeswaran, MadhunekaSundararajan, Abhinav, " An innovative approach to monitor brain tumor propagation and track the efficacy of treatment by processing MR Images," International Conference on Industrial Instrumentation and Control (ICIC), PP 897-901,2015.
- [10] S. Mahalakshmi* and T. Velmurugan, " Detection of Brain Tumor by Particle Swarm Optimization using Image Segmentation", Indian Journal of Science and Technology, Vol 8(22), PP 13-19,September 2015.
- [11] KshitijBhagwat, Dhanshri More, SayaliShinde, AkshayDaga, Assistant Prof RupaliTornekhar, "Comparative Study of Brain Tumour Detection Using K means, Fuzzy C Means and Hierarchical Clustering Algorithms", International Journal of Scientific & Engineering Research, Volume 4, Issue 6,PP-626-632 June-2013.
- [12] SegmentatiKalaiselvi , H Hannah Inbarani, " Performance Analysis of Entropy based methods and Clustering methods for Brain Tumor segmentation", International Journal of Computational Intelligence and Informatics, Vol. 3: No. 3, PP 187-194, October - December 2013.